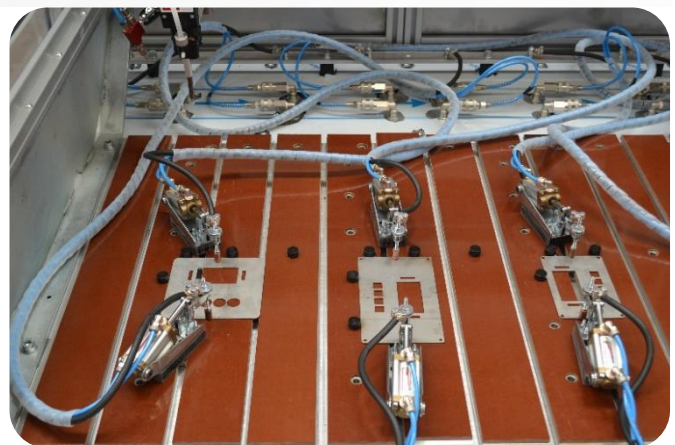
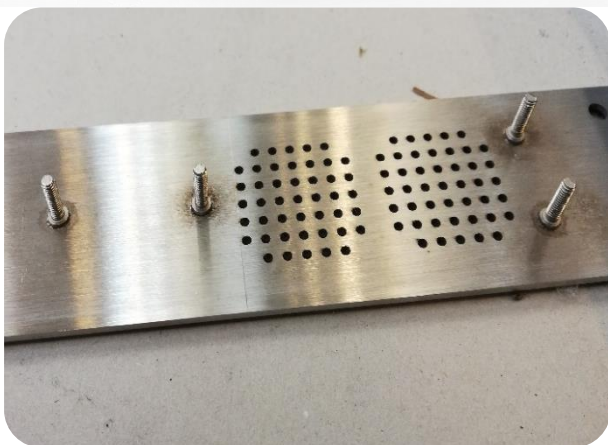
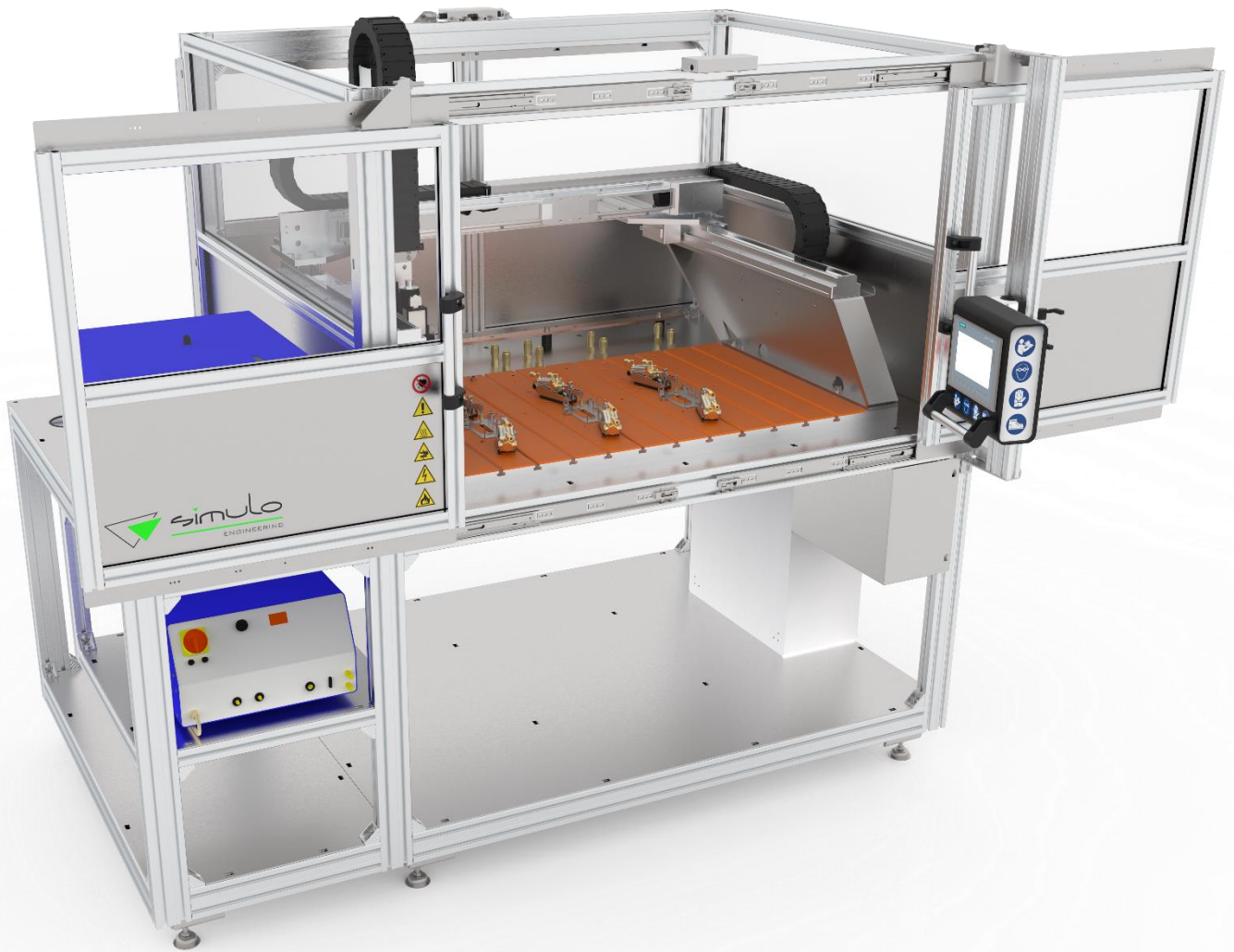
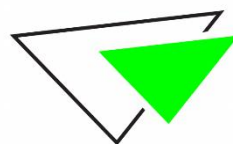


## STUD WELDING AUTOMATIONS

### SW800-600

Entry-level cartesian robot for automatic stud welding on flat sheet metal parts.  
Compact machine, designed for those who need to automate stud welding even with low-volume production.





## TECHNICAL DATA

### SW800-600

Dimensions	(LxWxH) 2150x1250x1890 mm
Working area	800x600mm; working area divisible into several sub-areas. T-slot machine table made from 40mm thick aluminium plate with insulating coating
Controller and display	SIEMENS S7-1200 PLC with Ethernet interface for network connectivity and 7" HMI touch screen panel mounted on adjustable bracket
Motor-driven axes	3 SMC motor-driven axes (X, Y, Z) + pneumatic slide for quick descent of welding head (Z)
Positioning speed	Up to 100 mm/s
Pneumatics	FESTO
Standard welding unit	SOYER BMS-10N AUTO capacitor discharge stud welder (other models/process technologies available upon request)
Standard welding head	SOYER SK-5AP automatic welding head
Max. number of welding heads	1
Stud feeder	SOYER UVR-300 automatic vibratory bowl stud feeder
Workpiece clamping	Up to 6 pneumatic clamps with ground cables (2 pneumatic clamps included)
Weldable materials	Steel, stainless steel, aluminium, brass
Welding range	M3 – M8 or $\varnothing$ 2 – 8 mm, 6 – 50 mm in length (other diameters, lengths or welding elements upon request)
Positioning accuracy of welded stud	$\pm 0,15$ mm
Mains supply	220-240Vac 50-60Hz
Compressed air supply	6-10bar
Safety systems	Housing with front and rear interlocking sliding doors (front and rear safety light curtains upon request)

#### OPTIONS:

- other stud welding units/welding heads available upon request;
- working area of different sizes;
- protective fluid spraying unit;
- additional pneumatic clamps;
- special stud feeding equipment (e.g. pick&place);
- easy remote programming from dxf/dwg files with *Simulo tool* software;
- teleassistance service;
- other options available upon request.

 **INDUSTRY**

 **4.0**

 **READY**